

Packaging and Packaging Material

Types of Packaging

- Wooden boxes
- Cardboard
- Waxed cardboard
- Corrugated plastic
- Expanded polystyrene
- Combinations of the above
- Palletainers

Wooden boxes

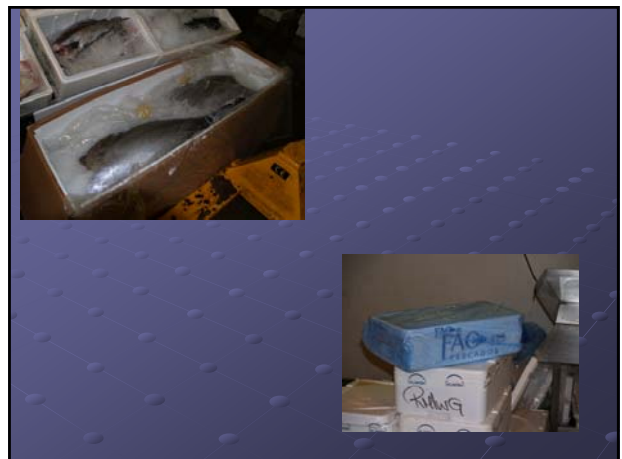


Cardboard boxes





Waxed cardboard



Temperature Control

- Block ice
- Crush ice
- Flake ice
- Liquid ice/ice slurry
- Dry ice
- Gel packs
- Thermal blankets



Frozen 'Heat sinks'



Chilled

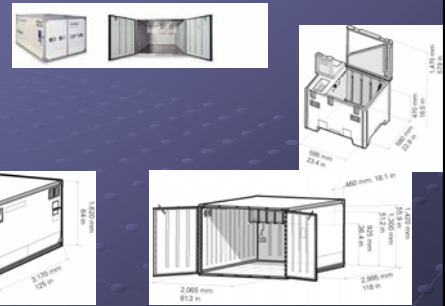
- Palletainers
- Expanded polystyrene
 - Leak-proof
- Waxed cardboard
- Fibreboard boxes
- Canned
- Vacuum packs
- MAP



Frozen

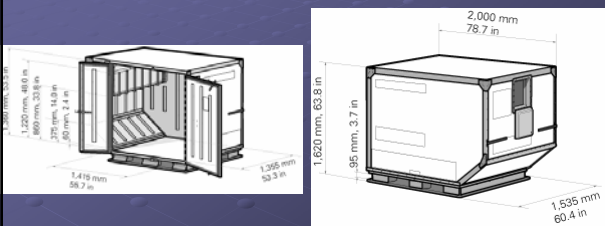
- Blocks
- IQF
 - Shatter-pack
 - Prawns
 - Bulk bags
 - Individual bags
- Palletainers
- Cans

Envirotainer



Uses dry-ice as a coolant -20°C to +20°C

Enviro-tainer



Can for air transport



Can for air transport



Container packing for air transport



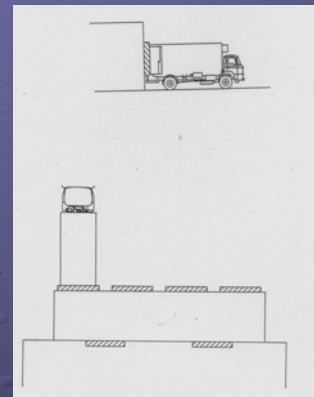
Damage at base of container



Damage at base of container



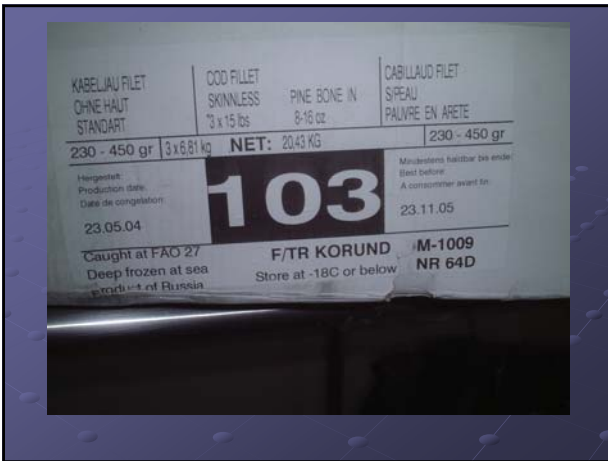
Damaged Polystyrene box showing ice and poly-bag



Transport

- Trunkers reverse up to loading bays and are 'sealed' to the bay by means of a cushion.
- This virtually eliminates the exchange of air between the outside and the loading bay, thus keeping the loading bay cool. Roller doors are only opened once the body is sealed against the cushions.





Dried fish

- Fibreboard boxes
- Poly bags
- Vacuum packs
- Cling-film



Bacalhau or Salt fish



Canned/bottled

- Cans
 - Metal
 - Plastic
- Retort pouch
- Glass jars

Cans and jars of fish products

